

Flat 6, 4 Beenland Place
Torquay TQ2 5AF
£625 PCM



Flat 6, 4 Beenland Place
Torquay TQ2 5AF

£625 PCM



1



1



1



C

Winfields

Sales & Lettings

- One Bedroom Maisonette
- Bathroom/WC
- Close to local shops & Amenities
- Lounge
- Cloakroom
- uPVC double glazing
- Kitchen
- Close to Local Bus Routes & Torre Train Station
- Electric heating

Entrance -

UPVC obscured double glazed door into;

Kitchen -

UPVC double glazed window allowing natural light. Wood effect flooring. A range of modern base and wall mounted units with rolled edge work surfaces and tiled splash backs. Sink with mixer tap over. 4 point hob with oven under and extractor hood over. Space for washing machine and fridge/freezer.

Living room -

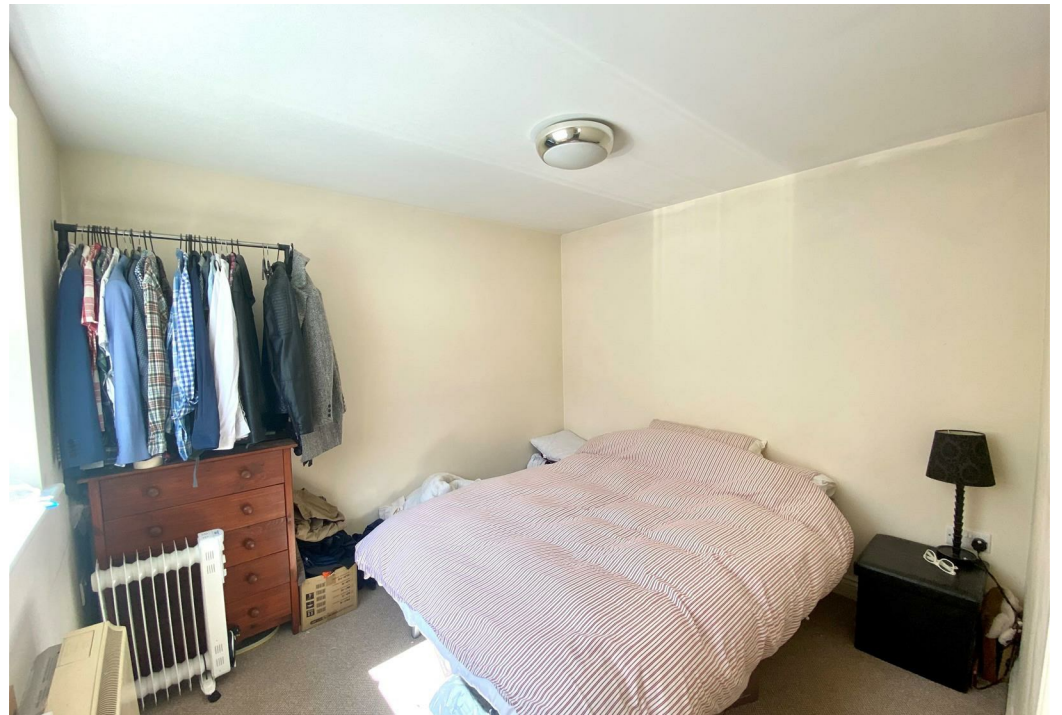
UPVC double glazed window. Carpeted flooring. Electric storage heater. TV point. Fire alarm. Stairs rising to first floor.

Bathroom -

UPVC obscured double glazed window. Tiled flooring. Pedestal wash hand basin. Low level W/C. Bath with tiled surround and electric shower above.

Bedroom -

UPVC double glazed window. Carpeted flooring. Electric storage heater. Storage cupboard.



FLOOR PLAN & E.P.C.

Energy Efficiency Rating

	Current	Potential
<i>Very energy efficient - lower running costs</i>		
(92 plus) A		
(81-91) B		
(69-80) C	73	75
(55-68) D		
(39-54) E		
(21-38) F		
(1-20) G		
<i>Not energy efficient - higher running costs</i>		

England & Wales

EU Directive
2002/91/EC



Environmental Impact (CO₂) Rating

	Current	Potential
<i>Very environmentally friendly - lower CO2 emissions</i>		
(92 plus) A		
(81-91) B		
(69-80) C	67	68
(55-68) D		
(39-54) E		
(21-38) F		
(1-20) G		
<i>Not environmentally friendly - higher CO2 emissions</i>		

England & Wales

EU Directive
2002/91/EC





Winfields

Sales & Lettings

PAIGNTON
(01803) 320969

322 Torquay Road, Preston
Paignton, Devon TQ3 2DZ

EXETER
(01392) 984126

Unit 2b Manaton Court,
Exeter, Devon EX2 8PF

BRISTOL
(0117) 287 2199

13 Harbury Road, Bristol,
BS9 4PN

www.winfieldsgroup.co.uk

 a family-run
business

 RICS